



The Catherine Bullen Foundation

Making a difference in rural Namibia

NEWSLETTER

No: 40

Autumn 2020

Anniversary Edition

In July 2020, the Foundation celebrated the fifteenth anniversary of it becoming a registered charity and at the same time it passed an important milestone when it was announced that it has now raised over **£500,000 (N\$8,250,000** based on an average exchange rate of N\$16.5 over the 15 years) for its projects in Namibia.

This has been due to the generous support of the local Mersea community and those further afield over the past years. Those donating recognise the valuable work that is being done and because the Foundation has low overheads, 99.9% of the money donated goes to its projects which are monitored by Linda and Roger, by twice yearly visits to Namibia, at no cost to the charity.

Since its inception, the Foundation has focused on the rural communities in the Omaheke Region. Here is a reminder of our projects and what has been achieved with your support and with the assistance of Komeho Namibia Development Agency, our Namibian ngo partner.



Our first project – the refurbishment of a borehole for the Omuhaturua Primary School and hostel and the Otjimanangombe community in 2004.



Left: The Otjimanangombe Primary Healthcare Clinic and accommodation constructed by the Foundation in 2008. **Right:** The clinic was extended by the Global Fund in 2018.



In October 2008, the Foundation donated an ambulance for the Omaheke Region and it is based at the clinic at Epukiro. Roger and Linda handing over the ambulance at the Ministry of Health in Windhoek.



Left: October 2009, the donation of 60 goats to San bushman families (5 goats for each family). This was followed by a further 15 goats. **Right:** The Foundation donated 20 sheep to Omuhaturua Primary School in October 2010 during its 10th anniversary celebrations. The photo shows Roger handing them over to the Deputy Minister of Education. They were for teaching the children sheep husbandry.



In October 2011, a formal kitchen and dining area built by the Foundation was opened at Omuhaturua Primary School Hostel. This replaced the cooking pots on fires outside and provided a covered seating area for the children.



Left: In April 2015, the Omuhaturua Primary School Hostel put in a request for chickens to provide eggs for the Hostel. The Foundation posted an appeal on Facebook and within 48 hrs it had had pledges for 50 chickens. **Right:** In October 2015, the Foundation opened a 40 bed dormitory that it had built to alleviate overcrowding at the Eiseb Primary School hostel.



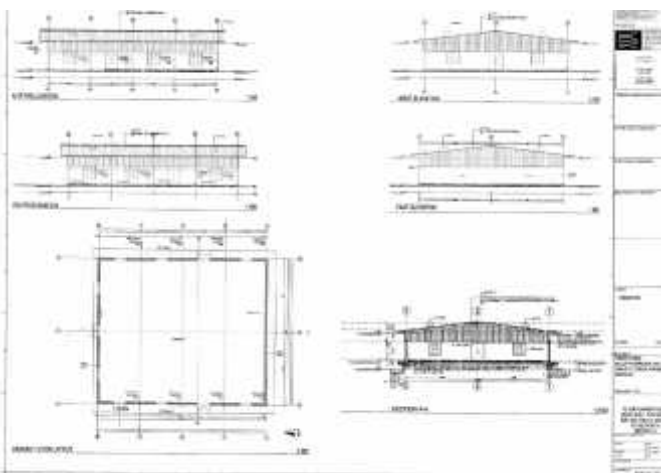
In October 2016, the Foundation opened a formal kitchen and dining area that it had built at the Eiseb Primary School Hostel. **Left:** A general view of the building. **Right:** The dining area which seats up to 300 children with the kitchen in the background.



In April 2018, a new dormitory was opened at Omuhaturua Primary School Hostel which had been converted by the Foundation from a very large storeroom. Attached to the dormitory were two blocks of flush toilets for boys and girls. At the same time, 130 mattresses were donated to the hostel by the Foundation with the assistance of the International School of Paris.



During a visit by the Foundation to Good Hope Primary School and hostel, it was discovered that they needed two large industrial electric cooking pots. The St Marys Senior School for Girls in Colchester took this on as a fundraising project and in October 2019, these were presented to the Hostel kitchen.



The Foundation's current project is the construction of a multi-purpose hall at Omuhaturua Primary School and Hostel. Progress has been slow due to the rocky sub strata, but plinths are in place for the steel framework. Work was suspended due to the Covid19 lock down measures, which have now been lifted and building will recommence next month. This is fully funded.



Left: Planning is in hand to provide a borehole to provide fresh water for Eiseb Primary School and Hostel and the nearby State Clinic. Due to Covid19, this has been delayed and drilling is scheduled to take place in October 2021. This is fully funded. **Right:** With the critical shortage of ‘proper’ ambulances in the Omaheke region, the Foundation has decided to provide another ambulance to be based this time at the recently extended Otjimanangombe Primary Healthcare Clinic. This is the project that we are currently fundraising for. It is hoped that an order can be placed in May 2021 for delivery in October 2021.

All the projects on this and the previous pages would not have been possible without your support for which we and the Namibian people are truly thankful. Due to the Covid19 pandemic, virtually all the Foundation’s physical fundraising has come to a halt and we would welcome any donations to help it carry on with it’s work.

It’s up again at last



About a year and half ago, one of the road signs directing people to the Catherine Bullen Primary Healthcare Clinic at Oshivelo was knocked down either by the wind or a vehicle. The sign was retrieved and put in store at the clinic.

Now with the help of the local community and funding from the Foundation it has been repaired and re-erected.

The Covid19 situation in Namibia

When we left Namibia at the end of last March there were eleven cases. As at 21 September, there are now 10,377 cases with 112 deaths. Initially the epicentre was at Walvis Bay, but this has now moved to Windhoek, the capital. On 17 September, it was announced that the State of Emergency and the nationwide lock down was to end although restrictions on leisure facilities and number of people able to meet are still in place.

With tourism being major part of the economy, the government announced a recovery plan as from the 1 September. Tourists are now allowed back into the country but only by flying into Windhoek. They have to have a Covid19 test, 72 hours prior to arriving in the country which obviously needs to be negative and then another test 5 days into their trip. Ethiopian Airlines are now flying back into the country and Eurowings followed with its first flight landing on 20 September. No doubt Qatar Airlines will follow shortly.

Round the Mersea Island Yard Sale.

This is the one and only physical fundraising event that we have done since the Covid19 restrictions started last March. This was organised by the Mersea Island Carnival committee and 49 households including the Foundation took part selling items from the safety of their drives and was held over the August Bank Holiday Sunday and Monday. We had a successful sale and raised £300 for the Foundation's Namibian projects.



The Foundation's Yard Sale at 15 Colchester Road, with Roger wearing the obligatory face mask.

Face Masks

Long time friend and supporter of the Foundation, Yvonne Cooper has been busy making face masks to raise funds which will be split between the Foundation and the Rob George Foundation. Our grateful thanks to Yvonne for this.

Mersea Rotary Club

We have visited the Mersea Rotary Club on a number of occasions and given presentations on the Foundation's work and they have supported us with donations. The Club now wishes to put its international aid on a more formal basis by partnering the Foundation with its work in Namibia and more specifically by assisting to fund the ambulance project. It is also hoped to twin the club with a rotary club in Windhoek and we took part in a Zoom meeting with them as a first step towards this.

Obituaries

We are sad to report the deaths of two of our supporters.

Pamela Howes

Pamela was born in Namibia and was the long term friend of Margo Bishop who ran half and full marathons for us in Namibia. Pamela was the wife of Matthew Reeve who ran the 2018 London Marathon for the Foundation. She was a very talented and vivacious lady who will be sadly missed. Our condolences go to Matthew and Joy her mum who we visited a couple of times in Namibia and was unable to come to the funeral due to Covid19 restrictions. Matthew nominated the Foundation as one of three charities for donations in her memory and we received £605.75 for our Namibia projects. Our grateful thanks to all those who donated in her memory.

David Shuttleworth Buck

I first met David many years ago when I was researching my book on the First World War casualties from Mersea Island in connection with his uncle, Frederick White. Since then, we became friends and he periodically visited us with a large whisky bottle full of 5p pieces which he had collected from parishioners from the churches he was involved with at Welwyn Garden City and Leigh on Sea and to date has totalled £1,410.55. David also supported the Foundation with personal donations for which we were very grateful. Our condolences go to Gillian, his wife and the family.

An appeal for donations

In common with other charities, the Catherine Bullen Foundation is having to suspend its fundraising activities during the period of Government Covid19 restrictions and until it is safe for our volunteers to participate again.

It would be very much appreciated especially at this time, if you feel you could support us with a donation for our projects in Namibia. As we are a UK charity working overseas we are not eligible for any British Government grants.

It can be made on line on our website www.namibia-aid.org.uk through 'virginmoneygiving' or 'Paypal'.

By sending a cheque made out to the Foundation to 15 Colchester Road, West Mersea, Colchester, Essex, CO5 8RS

By bank transfer to:

Account Name: The Catherine Bullen Foundation Registered Number – 1110516

Sort Code: 20-22-67

Account No: 53717690

Thank you and stay safe.

Donating in lieu of sending Christmas Cards

Nowadays, some people have made the decision not to send Christmas cards, but to make a donation to a charity instead. If this is what you intend to do this year, we would be grateful if you would consider donating to the Foundation.

Regular giving

Some of our donors have made a more formal arrangement by setting up a standing order to donate a regular monthly or yearly sum. If you would like to support us in this way, please use the above banking details so that you can set it up.

Presentations

The Foundation is pleased to give presentations to groups and clubs on its work during the day or evenings. Obviously this is now on hold due to the Covid19 situation.

Forthcoming Events

Due to the Covid19 restrictions and the safety of our volunteers, we have no fundraising events planned, except possibly the following:

Saturday 12 December 2020

Shop collection – West Mersea Co-op

Make a difference!

The Catherine Bullen Foundation is working with local communities to help build and nurture a new life for the people in rural Namibia. Because we are a small charity, our overheads are small and are personally covered by the trustees, so that every single penny donated to us goes to the intended project, with spending strictly monitored by the UK trustees and their ngo partner in Namibia. All visits to Namibia are self-financed and no charitable funds are used for this purpose. Please help us make a difference by making a donation, either on line at www.namibia-aid.org.uk or sending it to the address below.

How to contact us

By Email: info@namibia-aid.org.uk

By Post: The Catherine Bullen Foundation
Pear Tree Cottage
15 Colchester Road
West Mersea
Colchester
Essex
CO5 8RS
United Kingdom

By phone: 01206 383368 (inside UK) or 0044 1206 383368 (from outside UK)
Mobile: 07771 630928
07733 140748

Donation/Gift Aid Declaration

(The Catherine Bullen Foundation – Registered Charity No. 1110516)

Details of donor

Title..... Forename(s).....Surname.....

Address.....

.....

.....

Post Code.....

Signature.....

Date.....

I want the charity to treat

*the enclosed donation of £..... as a Gift Aid donation

*the donation(s) of £..... which I made on/..../.... as (a) Gift Aid donation(s)

**delete as appropriate*

**You must pay an amount of Income and/or Capital Gains Tax at least equal to the tax that the charity reclaims on your donations in the appropriate tax year.
(currently 25p for each £1 you give).**